

# ELT12-ELT15

Overcomes obstacles.  
 Stacker truck suitable for picking and depositing  
 operations with initial lift function  
 for overcoming obstacles.



Distinguishing mark	1.1	Manufacturer			
	1.2	Manufacturer's type designation			
	1.3	Drive: electric (battery or mains), diesel, petrol, fuel gas			
	1.4	Operator type: hand, pedestrian, standing, seated, order-picker			
	1.5	load capacity/rated load	Q	t	
	1.6	Load centre distance	C	mm	
	1.8	Load distance, centre of drive axle to fork	x	mm	
	1.9	Wheelbase	Y	mm	
	Weight	2.1	Service weight		Kg
		2.2	Axle loading, laden ( front / rear )		Kg
2.3		Axle loading, unladen ( front / rear )		Kg	
3.1		Tyres: solid rubber, superelastic, pneumatic, polyureth.			
3.2		Tyre size, front		mm	
3.3		Tyre size, rear		mm	
3.5		Wheels, number front rear (x = driven wheels)			
3.6		Tread, front	b <sub>10</sub>	mm	
3.7		Tread, rear	b <sub>11</sub>	mm	
Dimensions		4.2	Height, mast lowered	h <sub>1</sub>	mm
	4.3	Free lift	h <sub>2</sub>	mm	
	4.4	Lift	h <sub>3</sub>	mm	
	4.5	Height, mast extended	h <sub>4</sub>	mm	
	4.6	Initial lift	h <sub>5</sub>	mm	
	4.8	Seat height/stand height	h <sub>7</sub>	mm	
	4.9	Height of tiller in drive position ( min. / max. )	h <sub>14</sub>	mm	
	4.15	Height of forks from ground	h <sub>13</sub>	mm	
	4.19	Overall length	l <sub>1</sub>	mm	
	4.20	Length of face of forks	l <sub>2</sub>	mm	
	4.21	Overall width	b <sub>1</sub>	mm	
	4.22	Fork dimensions	sl <sub>ell</sub>	mm	
	4.24	Fork - carriage width	b <sub>3</sub>	mm	
	4.25	External fork widths	b <sub>5</sub>	mm	
	4.32	Ground clearance, centre of wheelbase	m <sub>2</sub>	mm	
4.34	Aisle width for pallets 800 x 1200 crossways	A <sub>st</sub>	mm		
4.35	Turning radius	Wa	mm		
Performance data	5.1	Travel speed ( laden / unladen )		Km/h	
	5.2	lift speed ( laden / unladen )		m/s	
	5.3	Lowering speed ( laden / unladen )		m/s	
	5.7	Gradeability ( laden / unladen )		%	
	5.8	Max. gradeability ( laden / unladen )		%	
	5.10	Service brake			
	Electric - engine	6.1	Traction motor, power KB 60'		KW
		6.2	Lifting motor, performance 15% ED		KW
		6.3	Battery DIN 43531/35/36 A, B, C,		
		6.4	Tension / nominal capacity		V / Ah
6.5		Battery weight (+- 5%)		Kg	
8.1		Control type			
8.4		Sound level at the driver's ear according to DIN 10 053		dB(A)	

SAMAG	
ELT 12	ELT 12 P.O.
Electric	
Pedestrian	Stand-on
1,2	
600	
713 ( 2 )	
1233 ( 2 )	
1030 ( 4 )	1070 ( 4 )
828 / 1402	946 / 1324
760 / 270	830 / 240
Vulkollan	Vulkollan
260x85 / 150x50	
85x70	
3/4	
754	
365	
( see table )	
( see table )	
( see table )	
( see table )	
( see table )	
135	
952 / 1326	992 / 1366
90	
( see table )	
( see table )	
880	
70x195x1150	
650	
560	
30	
( see table )	
1451 ( 2 )	1579 - 1937 ( 2 ) ( 3 )
5 / 5,5	5 / 5,5 - 5,5 / 7
0,12 / 0,22	
0,30 / 0,24	
---	
7 / 15	
Electric	
1,5 AC	
2,5	
yes	
24 / 240	
204	
Electric AC	
<70	

SAMAG	
ELT 15	ELT 15 P.O.
Electric	
Pedestrian	Stand-on
1,5	
600	
713 ( 2 )	
1335 ( 2 )	
1210 ( 4 )	1250 ( 4 )
948 / 1562	1008 / 1542
880 / 330	940 / 310
Vulkollan	Vulkollan
310x90 / 150x50	
85x70	
3/4	
754	
365	
( see table )	
( see table )	
( see table )	
( see table )	
( see table )	
135	
992 / 1366	992 / 1366
90	
( see table )	
( see table )	
880	
70x195x1150	
650	
560	
30	
( see table )	
1563 ( 2 )	1690 - 2050 ( 2 ) ( 3 )
5 / 5,5	5 / 5,5 - 7,5 / 9 ( 3 )
0,11 / 0,18	
0,30 / 0,24	
---	
10 / 15	
Electric	
1,5 AC	
2,5	
yes	
24 / 320	
256	
Electric AC	
<70	

The tiller arm and central drive wheel, being spring loaded, enable you to maintain constant contact to the floor and reduce vibrations to operator's arms and also minimum steering effort even with full load. AC power traction motor that guarantees:

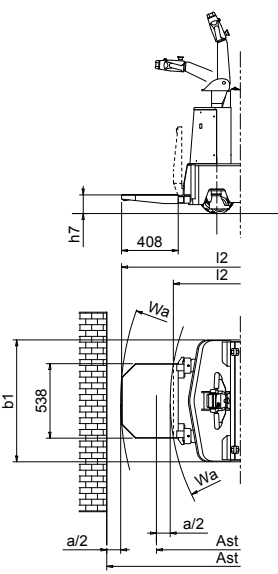
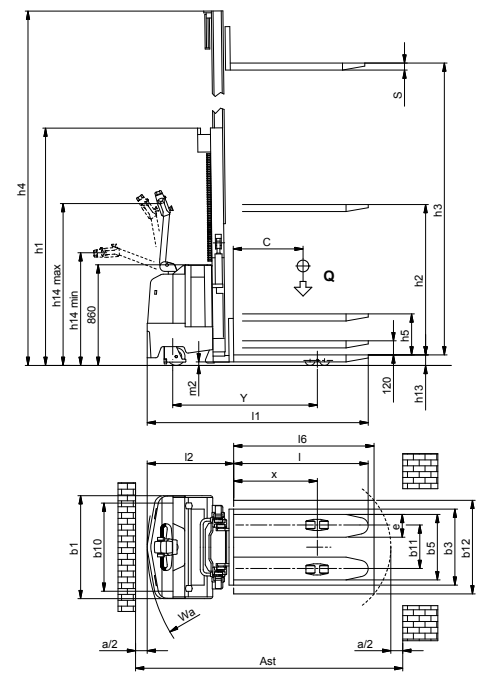
- Increased power,
- maximum performance levels with reduced maintenance required

**Special dimensions on request**

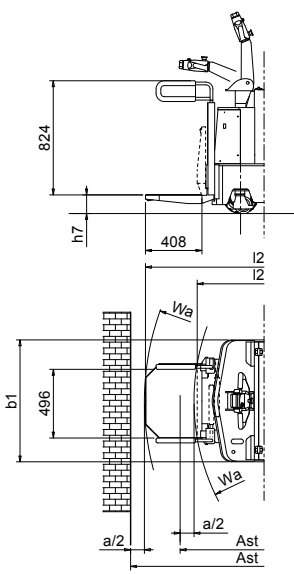
OVERALL DIMENSIONS OF LIFTING GROUPS																									
LIFT HEIGHT	Q ( kg )	h3		h5 ( 1 )		h2 ( 1 )		L1		L1 P.O. ( 1 )		L2		L2 P.O. ( 3 )		h1 ( 1 )		h4		h4 grid		Ast		Ast P.O. ( 3 )	
		ELT 12	ELT 15	ELT 12	ELT 15	ELT 12	ELT 15	ELT 12	ELT 15	ELT 12	ELT 15	ELT 12	ELT 15	ELT 12	ELT 15	ELT 12	ELT 15	ELT 12	ELT 15	ELT 12	ELT 15	ELT 12	ELT 15	ELT 12	ELT 15
Non telescopic NT	1700	1200	1500	1620	1620	/	/	1889	1996	1994-2368	2101-2475	739	846	844-1218	951-1325	2110	2130	2550	2139	2246	2267-2625	2373-2733			
Duplex "DV"	2500	1200	1500	2430	368	348	/	1888	2000	/	/	738	850	/	/	1810	2990	3355	2138	2250	/	/			
	3000	1200	1500	2930	368	348	/	1888	2000	1994-2368	2106-2480	738	850	844-1218	956-1330	2060	3490	3855	2138	2250	2266-2624	2377-2737			
	3500	900	1100	3430	368	348	/	1888	2000	1994-2368	2106-2480	738	850	844-1218	956-1330	2310	3990	4355	2138	2250	2266-2624	2377-2737			
	4100	700	900	4030	350	350	/	1888	2000	1994-2368	2106-2480	738	850	844-1218	956-1330	2610	4595	5435	2138	2250	2266-2624	2377-2737			
Duplex "DVL"	3000	1200	1500	2930	/	1520	1888	2000	1994-2368	2106-2480	738	850	844-1218	956-1330	2060	3490	3855	2138	2250	2266-2624	2377-2737				
	3500	900	1100	3430	/	1770	1888	2000	1994-2368	2106-2480	738	850	844-1218	956-1330	2310	3990	4355	2138	2250	2266-2624	2377-2737				

Ast includes "a" (manoeuvring space) = 200 mm and means empty pallet space

- (1) With stabilisers raised, increased by 120 mm
- (2) With stabilisers raised, decreased by 46 mm
- (3) Vertical platform/Horizontal platform
- (4) Values refered "to D300"



Without side protection for speed up to 6 km/h



With side protection for speed > to 6 km/h



Version with operator platform