

TM 20

Minimum overall dimensions,
maximum overall performance

Electric pallet truck with compact and very low design
to ensure the operator the best visibility possible.



SAMAG products and brochure specifications are subject to change without notice.

Distinguishing mark	1.1 Manufacturer		SAMAG	SAMAG	
		1.2 Manufacturer's type designation		TM 20	TM 20 PO
	1.3 Drive: electric (battery or mains), diesel, petrol, fuel gas		Battery	Battery	
	1.4 Operator type: hand, pedestrian, standing, seated, order-picker		Pedestrian	Stand-on	
	1.5 load capacity/rated load	Q	t	2,0	2,0
	1.6 Load centre distance	C	mm	600	600
	1.8 Load distance, centre of drive axle to fork	x	mm	856 (2)	856 (2)
	1.9 Wheelbase	Y	mm	1317 (2)	1317 (2)
Weight	2.1 Service weight		Kg	610	695 (3)
	2.2 Axle loading, laden (front / rear)		Kg	931 / 1679	993 / 1702 (3)
	2.3 Axle loading, unladen (front / rear)		Kg	500 / 110	560 / 135 (3)
Tyres, chassis	3.1 Tyres: solid rubber, superelastic, pneumatic, polyureth.			Vulkollan	Vulkollan
	3.2 Tyre size, front		mm	260x85 / 125x50	260x85 / 125x50
	3.3 Tyre size, rear		mm	85x70	85x70
	3.5 Wheels, number front rear (x = driven wheels)			1X + 2 / 4	1X + 2 / 4
	3.6 Tread, front	b ₁₀	mm	582	582
	3.7 Tread, rear	b ₁₁	mm	390	390
	4.4 Lift	h ₃	mm	130	130
	4.8 Seat height/stand height	h ₇	mm	-	135
	4.9 Height of tiller in drive position (min. / max.)	h ₁₄	mm	952 / 1326	952 / 1326
	4.15 Height of forks from ground	h ₁₃	mm	85	85
	4.19 Overall length	l ₁	mm	1780	1884 / 2258
	4.20 Length of face of forks	l ₂	mm	630	734 / 1108 (1)
	4.21 Overall width	b ₁ / b ₂	mm	730	730
	4.22 Fork dimensions	slell	mm	60 / 170 / 1150	60 / 170 / 1150
	4.25 External fork widths	b ₅	mm	560	560
	4.32 Ground clearance, centre of wheelbase	m ₂	mm	25	25
	4.34 Aisle width for pallets 800 x 1200 crossways	A _{st}	mm	2030	2156 - 2515 (1)
	4.35 Turning radius	Wa	mm	1515 (2)	1641 / 2000 (1) (2)
Performance data	5.1 Travel speed (laden / unladen)		Km/h	5 / 6	5 / 6 - 5,5 / 8,8 (1)
	5.2 lift speed (laden / unladen)		m/s	0,02 / 0,07	0,02 / 0,07
	5.3 Lowering speed (laden / unladen)		m/s	0,11 / 0,05	0,11 / 0,05
	5.7 Gradeability (laden / unladen)		%	-	-
	5.8 Max. gradeability (laden / unladen)		%	7 / 17	7 / 17
Electric - engine	6.1 Traction motor, power KB 60'		KW	1,5 AC	1,5 AC
	6.2 Lifting motor, performance 15% ED		KW	1,5	1,5
	Steering motor		KW	-	-
	6.3 Battery DIN 43531/35/36 A, B, C,			yes	yes
	6.4 Tension / nominal capacity		V / Ah	24 / 240	24 / 240
	6.5 Battery weight (± 5%)		Kg	221	221
	6.6 Energy consumption acc. To VDI cycle		kWh/h	-	-
	8.4 Sound level at the driver's ear according to DIN 10 053		dB/(A)	< 70	< 70

Tiller arm and drive wheel fitted in the central part of the truck, ensure the greatest advantages to the operator for:

- safety
- stability
- manoeuvrability (200° steering radius)

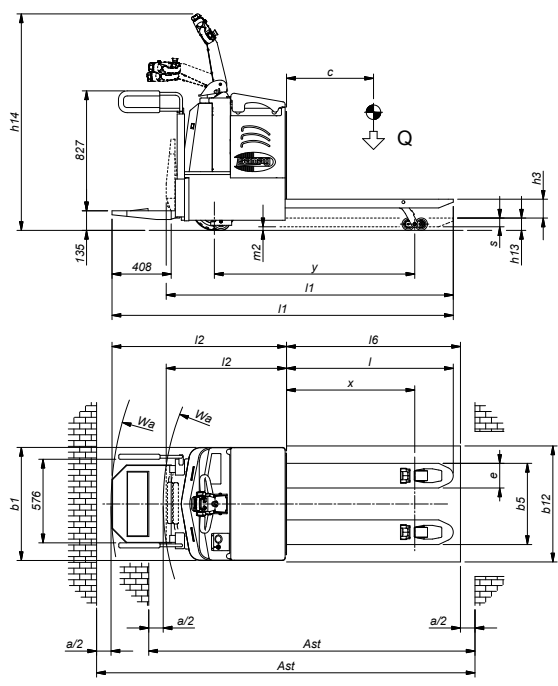
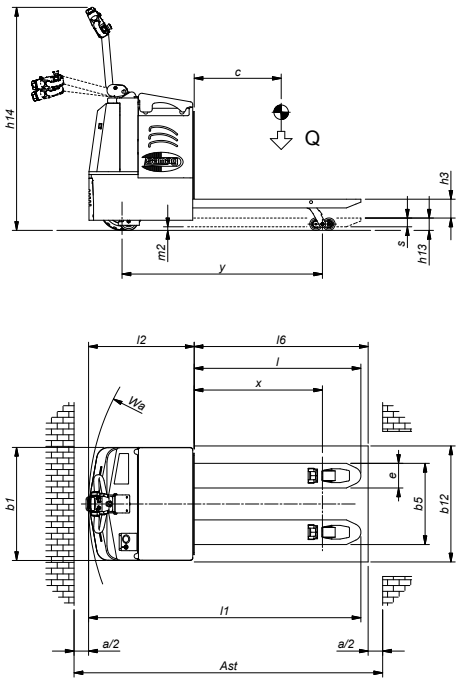
The spring loaded steering enables you to maintain constant contact of the drive wheel to the ground, excellent truck stability and use minimum steering effort even when the truck has a full load.

TRACTION MOTOR without brushes, with AC technology that give excellent performance levels and speed control on flat surfaces, in ascent and descent, and less maintenance interventions and MAXIMUM AUTONOMY AND PERFORMANCE of the battery.

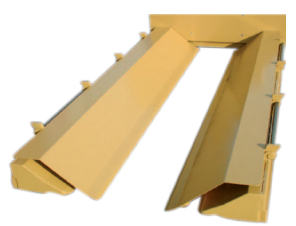
Slow functions button.

Special dimensions on request

- Ast includes " a " (manoeuvring space) = 200 mm
- 1) The first value indicates closed platform, second lowered for transporting operator
 - 2) With forks in rest position, it is increases to 92 mm
 - 3) Values without operator



Version with operator platform, sidseshift and side handles



Reel carrier version