

# TM 22

**It never stops working.**

Electric power pallet truck with compact design  
for intense working shifts.



SAMAG products and brochure specifications are subject to change without notice.

Distinguishing mark			SAMAG	SAMAG
1.1	Manufacturer		TM 22	TM 22 PO
1.2	Manufacturer's type designation		Battery	Battery
1.3	Drive: electric (battery or mains), diesel, petrol, fuel gas		Pedestrian	Stand-on
1.4	Operator type: hand, pedestrian, standing, seated, order-picker			
1.5	load capacity/rated load	Q t	2,2	2,2
1.6	Load centre distance	C mm	600	600
1.8	Load distance, centre of drive axle to fork	x mm	884 ( 2 )	884 ( 2 )
1.9	Wheelbase	Y mm	1381 ( 2 )	1381 ( 2 )
Weight				
2.1	Service weight		Kg	770
2.2	Axle loading, laden ( front / rear )		Kg	1082 / 1888
2.3	Axle loading, unladen ( front / rear )		Kg	630 / 140
2.1	Service weight		Kg	785 ( 3 )
2.2	Axle loading, laden ( front / rear )		Kg	1087 / 1878 ( 3 )
2.3	Axle loading, unladen ( front / rear )		Kg	635 / 130 ( 3 )
Tyres, chassis				
3.1	Tyres: solid rubber, superelastic, pneumatic, polyureth.		Vulkollan	Vulkollan
3.2	Tyre size, front		mm	310x90 / 125x50
3.3	Tyre size, rear		mm	85x70
3.5	Wheels, number front rear ( x = driven wheels )			1X + 2 / 4
3.6	Tread, front		b <sub>10</sub> mm	608
3.7	Tread, rear		b <sub>11</sub> mm	390
Dimensions				
4.4	Lift		h <sub>3</sub> mm	130
4.9	Height of tiller in drive position ( min. / max. )		h <sub>14</sub> mm	1540 / 1075
4.15	Height of forks from ground		h <sub>13</sub> mm	85
4.19	Overall length		l <sub>1</sub> mm	1875
4.20	Length of face of forks		l <sub>2</sub> mm	725
4.21	Overall width		b <sub>1</sub> / b <sub>2</sub> mm	780
4.22	Fork dimensions		sl <sub>ell</sub> mm	60 / 170 / 1150
4.25	External fork widths		b <sub>5</sub> mm	560
4.32	Ground clearance, centre of wheelbase		m <sub>2</sub> mm	25
4.34	Aisle width for pallets 800 x 1200 crossways		A <sub>st</sub> mm	2125
4.35	Turning radius		Wa mm	1609 ( 1 )
4.35	Turning radius		Wa mm	1734 / 2094 ( 1 ) ( 2 )
Performance data				
5.1	Travel speed ( laden / unladen )		Km/h	5 / 5,8
5.2	lift speed ( laden / unladen )		m/s	0,02 / 0,07
5.3	Lowering speed ( laden / unladen )		m/s	0,11 / 0,05
5.7	Gradeability ( laden / unladen )		%	-
5.8	Max. gradeability ( laden / unladen )		%	7 / 18
5.8	Max. gradeability ( laden / unladen )		%	7 / 18
Electric - engine				
6.1	Traction motor, power KB 60'		KW	1,5 AC
6.2	Lifting motor, performance 15% ED		KW	1,5
	Steering motor		KW	-
6.3	Battery DIN 43531/35/36 A, B, C,			yes
6.4	Tension / nominal capacity		V / Ah	24 / 320
6.5	Battery weight ( ± 5% )		Kg	265
6.6	Energy consumption acc. To VDI cycle		kWh/h	-
8.4	Sound level at the driver's ear according to DIN 10 053		dB/(A)	< 70

Tiller arm and drive wheel fitted in the central part of the truck that guarantee the operator the biggest advantages for :

- safety
- stability
- manoeuvrability (200° steering radius)

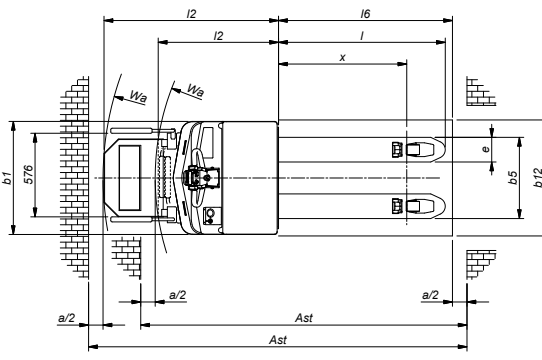
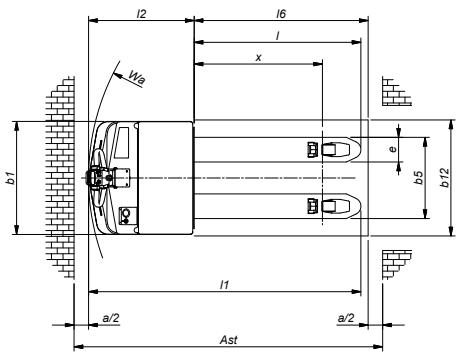
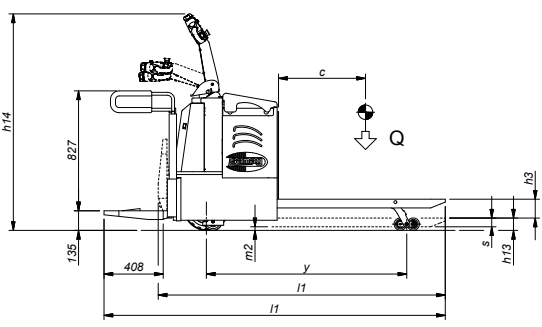
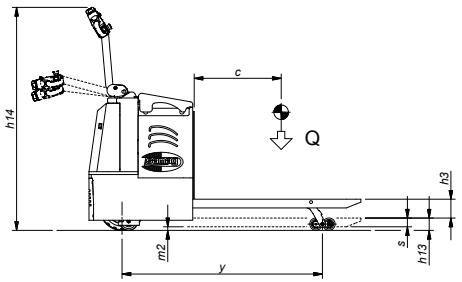
The spring loaded steering system enables you to maintain constant contact of the drive wheel to the ground, excellent stability of the truck and minimum steering force even when the truck is fully laden.

**TRACTION MOTOR** without brushes, in AC technology that gives excellent performance output and speed control on flat surfaces and up and down ramps and less maintenance servicing required

**MAXIMUM AUTONOMY and PERFORMANCE** of the battery

Ast includes "a" (manoeuvring space) = 200 mm

- 1) The first value indicates platform closed, the second platform lowered for operator transport.
- 2) With forks in rest position, value increases by 92 mm
- 3) Values without operator
- 4) Fast motor



Version with operator platform



Hour counter and fault finder



Reel carrier version